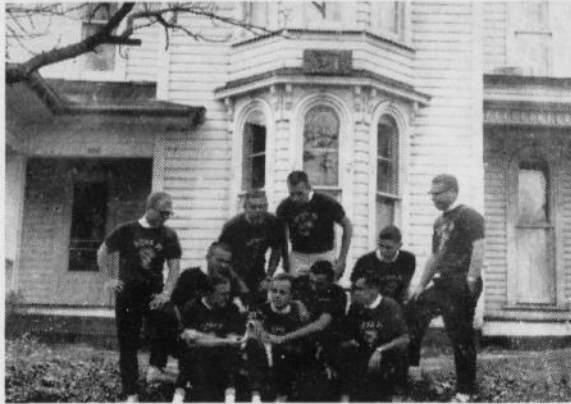


# SORORITY and FRATERNITY LIFE AT SR

## HOME AWAY FROM HOME



All frats are proud of their new houses at S.R.

## DELTA SIGMA

Delta Sigma was the first sorority to be granted a charter on the Slippery Rock campus. The purpose of this sorority is to promote friendship that is strong and lasting, to encourage high scholastic standards, and to endeavor to stimulate individuality among its members.

Delta Sigma's officers for this year are Beverly Markovich, President; Carole Kopac, Vice-President; Virginia Buko, Recording Secretary; Judy Chalmers, Corresponding Secretary; Susan Stewart, Treasurer; Jeanne Catone, Chaplain; Karen Cable, Publicity; Judy Coburne, Sergeant-at-Arms; Marty Gross and Karen Cable, Pan-Hellenic Representatives.

## TAU KAPPA EPSILON

The main objectives of TEKE are: to develop character; to discover and train mental aptitudes; to direct and stimulate intuitions and emotions; to learn about society and to apply talents and abilities as a member; to acquire a skill in communicating with fellow men; and to become proficient in manners, and honest and zealous in endeavors.

The officers of Gamma Phi Affiliate of Tau Kappa Epsilon Fraternity are: Prynitis (President), Rich Antozeski; Epipyrtanis (Vice-President), Jack Fisher; Grammateus (Secretary), Dick Schramko; Crysophylos (Treasurer), Dave Parry; Histor (Historian), Paul Vespaziani; Hypophetes (Chaplain), Paul Sherman; Pylortes (Sergeant-at-Arms), Joel Beason; and Hegeman (Pledge-Master), Ray Bechtel.

Faculty sponsors are Mr. La Monte Crape and Mr. Asa Wiley.

## SCOTT REVUE REHEARSAL



Greeks bring entertainment to campus for all S.R. students.

## TRI-SIGMA

Being the first National Social Sorority on campus, the Tri-Sigmas at Slippery Rock are ever striving to uphold the ideals of National Sisterhood. At the present time, over 22,000 young women in 63 collegiate chapters and 133 alumnae chapters pledge themselves to the open motto, "Faithful Unto Death". A purple violet, royal purple and white colors and the pearl are only a few of the common bonds which unite girls from all parts of the United States as sisters of Sigma Sigma Sigma.

One more thought will summarize our feelings toward Tri-Sigma: "Sisters not for just a day but for always."

Officers of Tri-Sigma are: Mimi Betka, President; Sandy Scurle, Vice-President; Liz Clawson, Corresponding Secretary; Carol Gesner, Recording Secretary; Jane Simpson, Keeper of Grades; Charlene French, Treasurer; and Mary Lou Clause, Assistant Treasurer.

Faculty advisor is Mrs. Winters, and Alumni advisors are Mrs. Walsh and Mrs. Schmittlein.

## SIGMA LAMBDA CHI

Sigma Lambda Chi was founded in October, 1960, at Slippery Rock State College by three sophomore women: Carolyn Baker, Natalie Girardi, and Toni Ruggier.

The initials of Sigma Lambda Chi stand for Scholarship, Leadership, and Character.

A contract has been awarded for the construction of the parking lot behind the James E. Morrow Fieldhouse. Construction has begun, and is expected to be completed within a week or ten days.

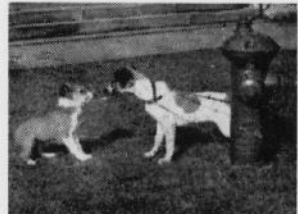
## ALPHA SIGMA DELTA

Alpha Sigma Delta was established as a social sorority in January, 1961. Its purpose is to organize students having the same interests and ideals into a group which will promote lasting friendships, encourage high scholastic standards, and encourage individuality coupled with willingness to accept responsibility. It cooperates in every respect with the faculty and administration.

The officers of the Alpha Sigma Delta Sorority are as follows: President, Joan Ulakovic; Vice-President, Mary Lou Otremski; Treasurer, Judith Gibson; Secretary, Danielle Burns; Corresponding Secretary, Georgia Carroll; Historian, Karen Clark; Chaplain, Diane Martins; Panhellenic Representative, Patricia Kedrick.

Faculty advisers are Dr. and Mrs. Edgar and Miss Kollar.

## EKET and NIKE



## SIGMA TAU GAMMA

Sigma Tau Gamma has the distinction of being the first nationally installed fraternity on campus (March 10, 1961). Sigma Tau Gamma, as a national fraternity, is located on virtually every state college campus in Pennsylvania and in many other schools with whom Slippery Rock's Beta Tau Chapter has contact.

The fraternity was established with the purposes of promoting the welfare of its members; promoting the highest ideals of manhood, brotherhood, and citizenship; upholding the traditions and ideals of the college in which its members are students.

Beta Tau Chapter, of Sigma Tau Gamma fraternity, officers are as follows: President, Anthony Daniels; Secretary, Thomas O'Connor; Treasurer, Allan Wilson; and Correspondent, Joseph Mitcho.

## SIGMA PI

Early in the school year of 1961-1962 a Sigma Pi field representative visited our campus with the idea of founding a Sigma Pi chapter here. The response was spontaneous. A fine group of fraternity-minded men who had not found quite the right fraternity banded together with true brotherhood spirit. On November 1, 1961, Sigma Pi Colony at Slippery Rock was officially installed as a colony to the Grand Chapter of Sigma Pi.

In December of this year Sigma Pi Colony will be installed as a chapter of Sigma Pi National Fraternity, having successfully petitioned the National Chapter for the granting of a charter.

Officers of Sigma Pi are: President, John Tressler; Vice-President, Lyle Trexler; Secretary, Rich Levis; Treasurer, Bob Roddy; Sergeant-at-Arms, Dick Webster; Chaplain, Milt Clancy; Pledge Master, Don Gibala; Historian, Pat Sherlock; Corresponding Secretary, Jerry Carinci; and I.P.C. Representatives, Don Johnson and Leo Gensante.

## TRAVELING SALESMEN



Greeks earn money for service and social functions.

## BETA CHI GAMMA

Beta Chi Gamma seeks to promote relationships on the community, campus, and intercollegiate levels. The sorority strives to foster the desire for knowledge, bonds of lasting friendship, high scholastic and moral standards, and individual self-improvement.

Officers are: President, Pat Tiffany; Vice-President, Kathy Albert; Corresponding Secretary, Sue Tenhula; Recording Secretary, Lue Ann Stoops; Treasurer, Peg Dambaugh; Chaplain, Ginger Blair; Rush Chairman, Phoebe Teichert; Social Chairman, Marilyn Jamison; and Historian, Nancy Knapp.

Sponsors for Beta Chi Gamma are Dr. and Mrs. Duncan and Dr. Barker.

## THETA CHI

The Alpha Sigma Chi Colony of Theta Chi was organized at Slippery Rock State College in January, 1961, with the purposes of offering true friendship to each member; encouraging intrafraternity co-operation and participation in fraternity activities; providing stimuli for scholastic endeavor; and encouraging participation in other worthwhile campus activities. Membership in Theta Chi is open to all male students of Slippery Rock and to men of all curricula.

The main projects being undertaken by the fraternity this year are the purchase of fraternity blazers, the organization of a social event to take place early in the second semester, and working toward national status for the fraternity.

## ALPHA CHI RHO

The National Fraternity of Alpha Chi Rho was founded at Trinity College in 1895. This mother Chapter was named Phi Psi and additional Chapters have always been considered in respect to our motto of growth, "slow but sure". At the present time there are 34 Chapters of Alpha Chi Rho, 11 of these in Pennsylvania. Those which are in the vicinity of Slippery Rock are at Thiel College and Allegheny College.

Alpha Chi Rho officers are: Jerry Osbourne, President; Jim Mirtle, Vice-President; Ray Ondako, Secretary; and Tox George, Treasurer.

Faculty advisers are Mr. Baierl, Mr. Weller, and Mr. Egli.

## PHI KAPPA CHI

Phi Kappa Chi sorority was founded in April, 1960, at Slippery Rock State College by a small group of girls interested in forming a common bond of sisterhood. This group held an organizational meeting, elected officers, adopted a constitution, and selected the name Phi Kappa Chi.

The officers at the present time are: President, Charlotte Templeton; Vice-President, Mary Ann DeCapua; Recording Secretary, Gloria DiNardo; Corresponding Secretary, Sue McIntosh; Treasurer, Elaine Pfug; Chaplain, Diane Osmann; Historian, Mary Jane Firkaly; Sergeant-at-Arms, Mary Ellen Maruco; and Panhellenic Council Representatives, Jan Colten and Bernie Pastorek.

## BEFORE THE DANCE



Sponsoring of Hut dances part of Greek activity.